

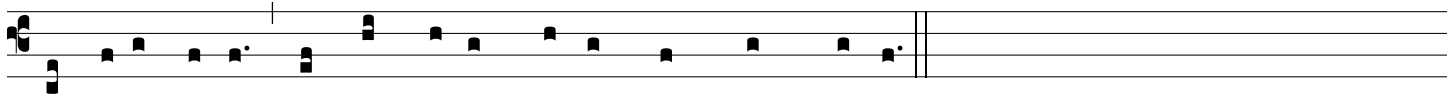
MARY, MOTHER OF GOD

Salve, sancta Parens

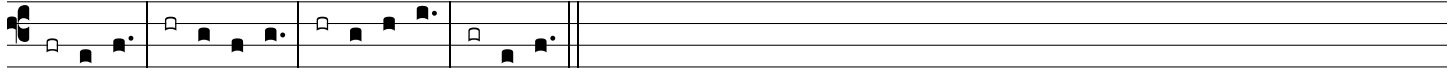
Mode II

Sedulius

ANTIPHON (Option 1)



Hail ho-ly Mother; the Child-Bear-er who has brought forth the King,

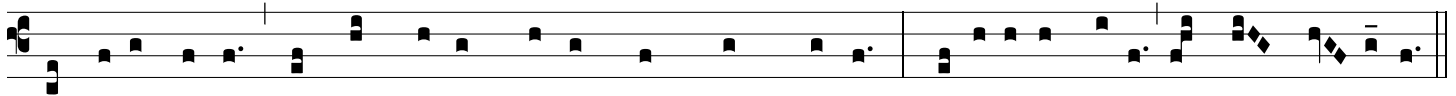


Psalm 45:2

1. My heart overflows with *noble words*.
To the king I address the song I *have made*,

Dox. Glory to the Father, and to *the Son*,
and to the *Holy Spirit*,
as it was in the *beginning, is now*,
and will be for ever. *Amen. FINAL ANTIPHON*

FINAL ANTIPHON



Hail ho-ly Mother; the Child-Bear-er who has brought forth the King, the rul-er of heaven and earth for ev-er.

Antiphon text translations by Solesmes Abbey, licensed in the Creative Commons.

Psalm verses are taken from *The Revised Grail Psalms* Copyright © 2010, Conception Abbey/The Grail, admin. by GIA Publications, Inc., www.giamusic.com All rights reserved.

Psalm Tone Copyright © 1973, 1993 Saint Meinrad Archabbey, All Rights Reserved. Used under Creative Commons Attribution-Noncommercial-No Derivative Works 3.0 United States License